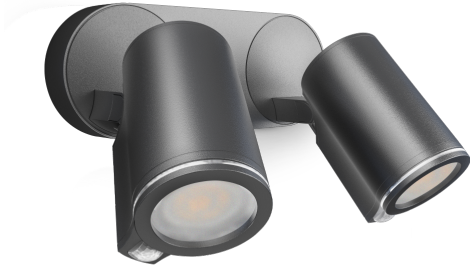


Sensor-switched LED floodlight

# Spot DUO S

with motion detector  
EAN 4007841 058647  
Article number 058647



LED

20.000 h

3000 K

3000K warm-white



38°



2x Infrared sensor  
90°



max. 10 m



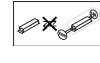
IP44



2 - 1000 lux



Light source  
replaceable by end  
user



Control gear not  
exchangeable



8 sec - 35 min

## Function description

Powerfully bright LED duo. Wall spot DUO Sensor with two swivelling spotlight heads (180° horizontally, 90° vertically), each with 90° infrared sensor (10 m reach). 2 x 520 lm from 2 x 7 W for optimum illumination all around the building. With time setting (8 s - 35 min) and twilight setting (2-1000 lux). Several spots can be interconnected by cable. Includes 2 GU-10 LED lamps.

## Technical specifications

Dimensions (L x W x H)	175 x 247 x 98 mm
With lamp	Yes, LED lamp
With motion detector	Yes
Manufacturer's Warranty	3 years
Settings via	Potentiometers
Version	with motion detector
PU1, EAN	4007841058647
Application, place	Outdoors
Application, room	outdoors, all round the building, terrace / balcony, courtyard & driveway
Colour	Anthracite
Includes corner wall mount	No
Installation site	wall
Installation	Wall, Surface wiring
Impact resistance	IK03
IP-rating	IP44
Protection class	I

Mechanical scalability	No
Reach, radial	r = 2 m (3 m <sup>2</sup> )
Reach, tangential	r = 10 m (79 m <sup>2</sup> )
Photo-cell controller	Yes
Luminous flux total product	1024 lm
Measured luminous flux (360°)	1024 lm
Total product efficiency	68,5 lm/W
Colour temperature	3000 K
Colour variation LED	SDCM5
Lamp	LED can be replaced
Service life LED L70B50 (25°)	> 20000 h
Soft light start	No
Continuous light	selectable
Twilight setting	2 – 1000 lx
Time setting	8 s – 35 Min.
Basic light level function	No
Main light adjustable	No

<https://www.steinel.de>

Subject to technical modifications

10.2023 Page 1 from 4

Sensor-switched LED floodlight

# Spot DUO S

with motion detector  
EAN 4007841 058647  
Article number 058647



## Technical specifications

Ambient temperature	-20 – 40 °C
Housing material	Aluminium
Cover material	Plastic, transparent
Mains power supply	220 – 240 V / 50 – 60 Hz
Mounting height max.	2,50 m
Sneak-by guard	No
Capability of masking out individual segments	No
Electronic scalability	No

Twilight setting TEACH	No
Interconnection	Yes
Interconnection via	Cable
Output	14,95 W
Colour Rendering Index CRI	= 81
Optimum mounting height	2 m
Detection angle	90 °

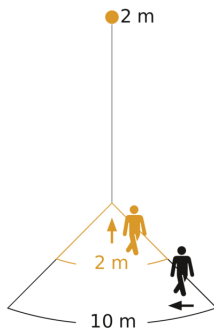
Sensor-switched LED floodlight

# Spot DUO S

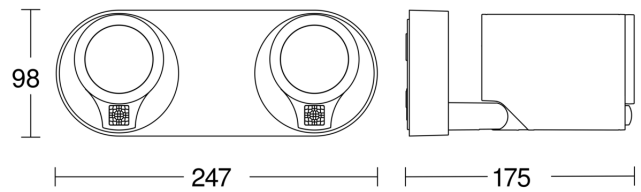
with motion detector  
EAN 4007841 058647  
Article number 058647



## Detection Zone

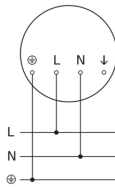


## Dimension Drawing

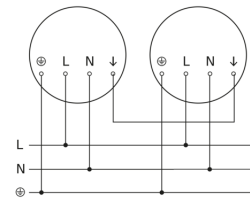


Possible mounting height: 1,80 m - 2,50 m  
Orange: radial  
Black: tangential

## Circuit diagram



## Master/master interconnection circuit diagram



Sensor-switched LED floodlight

# Spot DUO S

with motion detector  
EAN 4007841 058647  
Article number 058647



## Master/slave interconnection circuit diagram

