

## Motion detector

# IS 140-2

black  
EAN 4007841 608811  
Article number 608811



infrared sensor  
140°



max. 14 m

1000 W

1000 W max. (LED-  
ready)



IP54



Sensor 90° ver.,  
180° hor.



2 - 2000 lux



8 sec - 35 min



Ideal 2 m



energy saving

3 years

manufacturer's  
warranty

## Function description

The classic detector, now with even more class. Infrared motion detector IS 140-2, for indoors and out, ideal for targeted detection close to the building, 140° angle of coverage, reach up to 14 m, selectable time and twilight threshold, sensor turns through 180° and tilts through 90° for exact adjustment of the detection zone.

## Technical specifications

|                            |   |   |                                |
|----------------------------|---|---|--------------------------------|
| Dimensions (L x W x H)     | 99 x 86 x 82 mm   | LED lamps < 2 W                               | 16 W                           |
| Manufacturer's Warranty    | 3 years   | LED lamps > 2 W < 8 W                         | 64 W                           |
| Settings via               | Potentiometers  | LED lamps > 8 W                               | 64 W                           |
| With remote control        | No  | Capacitive load in µF                         | 88 µF                          |
| Version                    | black   | Technology, sensors                           | passive infrared, Light sensor |
| PU1, EAN                   | 4007841608811   | Mounting height                               | 1,80 – 3,00 m                  |
| Type                       | Motion detectors  | Mounting height max.                          | 3,00 m                         |
| Application, place         | Outdoors, Indoors   | Optimum mounting height                       | 2 m                            |
| Application, room          | outdoors, front door, all round the building, terrace / balcony, courtyard & driveway | Detection angle                               | 140 °                          |
| Colour                     | black   | Angle of aperture                             | 40 °                           |
| Colour, RAL                | 9005  | Sneak-by guard                                | Yes                            |
| Includes corner wall mount | No  | Capability of masking out individual segments | Yes                            |
| Installation site          | wall, corner  | Electronic scalability                        | No                             |
| Installation               | Surface wiring, Wall  | Mechanical scalability                        | No                             |
| IP-rating                  | IP54  | Reach, radial                                 | r = 3 m (11 m <sup>2</sup> )   |
| Protection class           | II  | Reach, tangential                             | r = 14 m (239 m <sup>2</sup> ) |

Motion detector

# IS 140-2

black  
EAN 4007841 608811  
Article number 608811



## Technical specifications

|  |                     |
|--|---------------------|
| Ambient temperature                                    | -20 – 50 °C         |
| Material   | Plastic             |
| Mains power supply                                     | 230 – 240 V / 50 Hz |
| Switching output 1, resistive                          | 1000 W              |
| Switching output 1, number of LEDs / fluorescent lamps | 6 pcs.              |
| Fluorescent lamps, electronic ballast                  | 430 W               |
| Fluorescent lamps, uncorrected                         | 500 VA              |
| Fluorescent lamps, series-corrected                    | 500 VA              |
| Fluorescent lamps, parallel-corrected                  | 500 VA              |
| Switching output 1, low-voltage halogen lamps          | 1000 VA             |

|                            |                     |
|----------------------------|---------------------|
| Switching zones            | 144 switching zones |
| Twilight setting           | 2 – 2000 lx         |
| Time setting               | 8 s – 35 Min.       |
| Basic light level function | No                  |
| Main light adjustable      | No                  |
| Twilight setting TEACH     | No                  |
| Constant-lighting control  | No                  |
| Interconnection            | Yes                 |
| Type of interconnection    | Master/master       |
| Interconnection via        | Cable               |

## Accessories

|                    |                      |
|--------------------|----------------------|
| EAN 4007841 631864 | Corner wall mount 07 |
| EAN 4007841 631765 | Corner wall mount 07 |

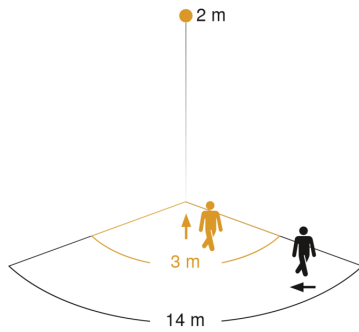
Motion detector

# IS 140-2

black  
EAN 4007841 608811  
Article number 608811

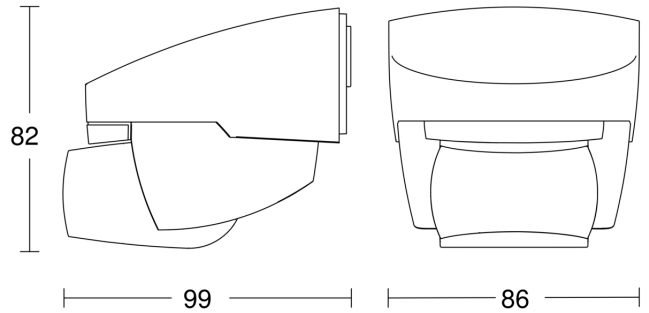


### Detection Zone

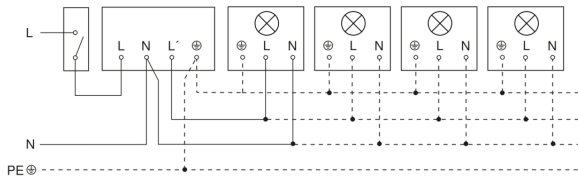


Possible mounting height: 1,80 m– 3,00 m  
Orange: radial  
Black: tangential

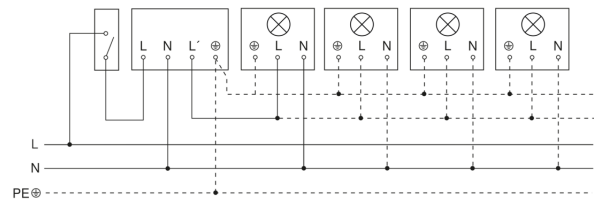
### Dimension Drawing



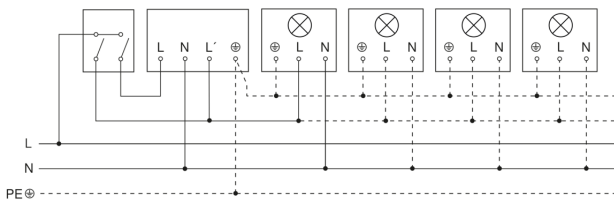
### Light without neutral conductor



### Light with neutral conductor



### Connection using two-circuit switch for manual and automatic operation



### Circuit diagram Connection via a changeover switch for continuous and automatic operation

