

EcoFlow DELTA Pro 3 Smart Extra Battery

Thank you for choosing our product!

Contents

About This Manual

Overview

Appearance

Button and LED Indicators

Get Started

Support Your EcoFlow DELTA Pro 3

Charge Your Smart Extra Battery

Storage and Maintenance

Safety Instructions and Compliances

Disclaimer

Safety Instructions

In Case of Emergency

Recycling and Disposal

Regulatory Compliance

Appendix

What's in the Box

Technical Specifications



FAQ



EcoFlow App



After-sales
Policy



Community

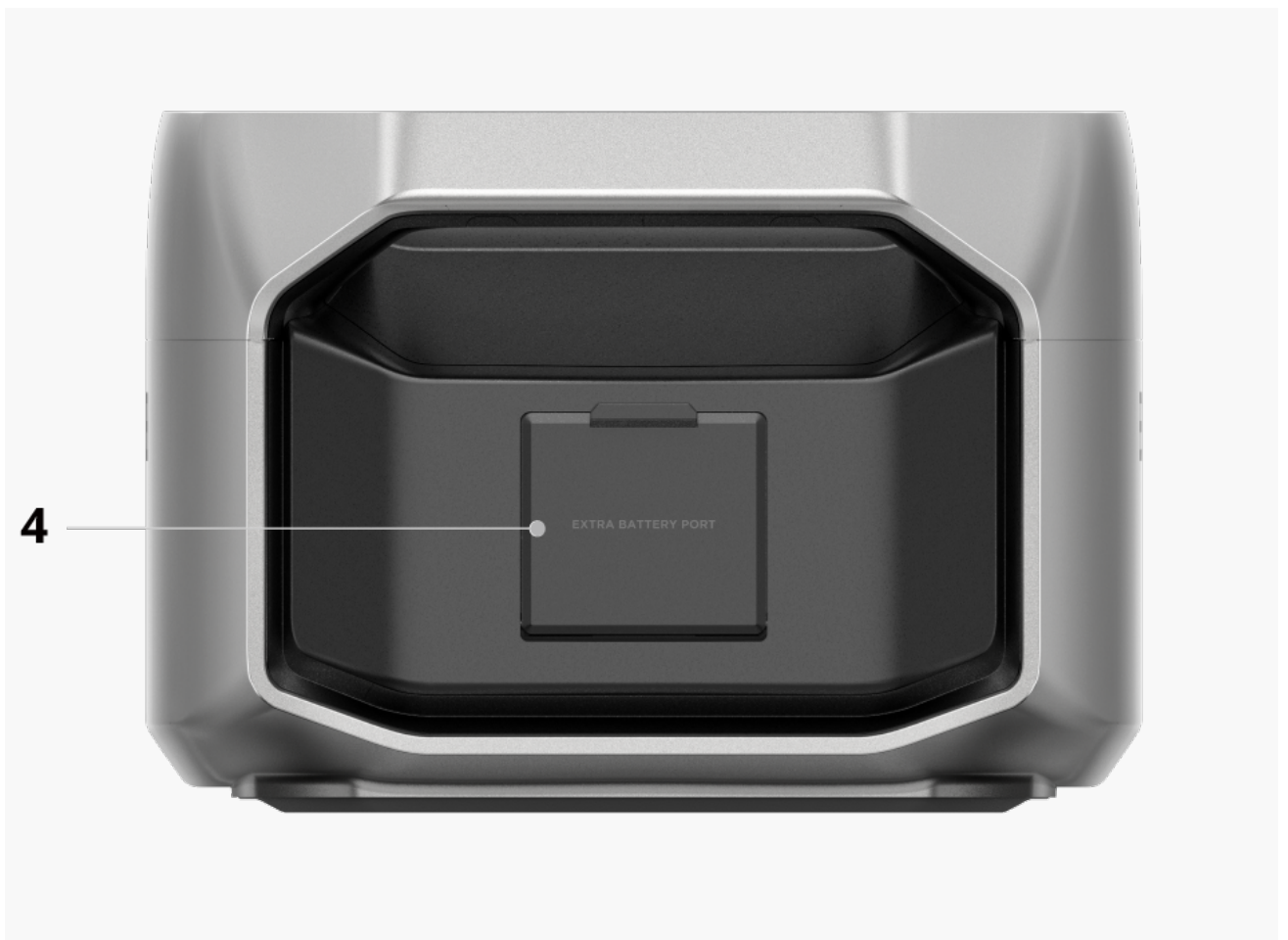
About This Manual

- This manual contains an introduction to this product, and details on its operation, management, and maintenance. Please note that this manual may be updated without prior notice.
- The availability of certain accessories and features described in this manual may vary depending on your country or region.
- All images displayed in this manual are for demonstrative purposes only. Please refer to the actual product received.
- If you are reading this manual in PDF format, please note that you can access it online at [EcoFlow Support](#) for a better experience and the latest updates.

Overview

EcoFlow DELTA Pro 3 Smart Extra Battery (hereinafter referred to as "the extra battery", "the battery", or "the product") is a LiFePO4 battery with a capacity of 4096Wh. It is designed to expand the battery capacity of your DELTA Pro 3 portable power station and provide longer-lasting power support.

Appearance



- | | |
|---|---------------------|
| 1 | Main Power Button |
| 2 | Main Power LED |
| 3 | Status LED |
| 4 | Extra Battery Port* |

* The Extra Battery Port on the battery is an EcoFlow proprietary port.

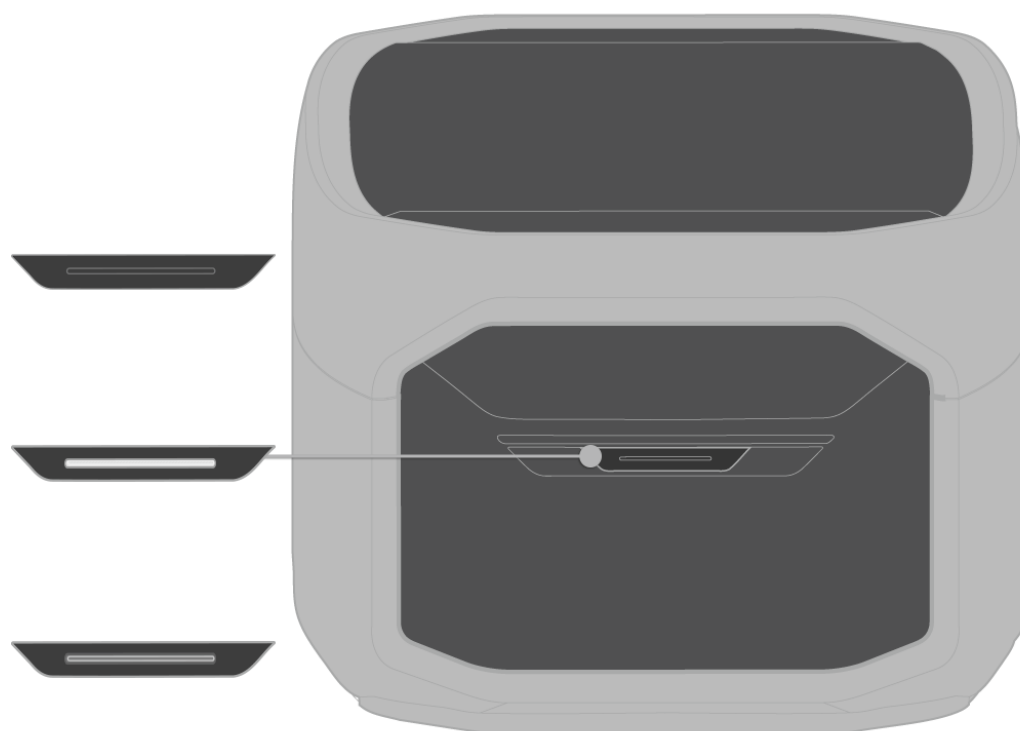
Button and LED Indicators

Main Power Button

- When connected to an EcoFlow DELTA Pro 3 power station
 - **Power On:** Press and hold the main power button for about 2 seconds

- until the LED indicator lights up.
- **Power Off:** Press and hold the main power button for about 2 seconds until the LED indicator turns off.
- **When not connected to an EcoFlow DELTA Pro 3 power station**
 - **Power On:** Press the main power button for 1 second until the LED indicator lights up.
 - **Power Off:** Press the main power button for 1 second until the LED indicator turns off.

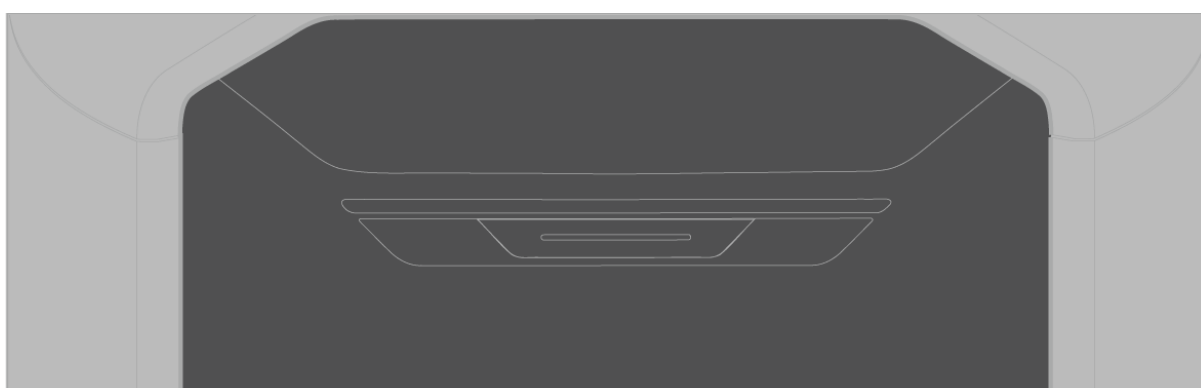
Main Power LED



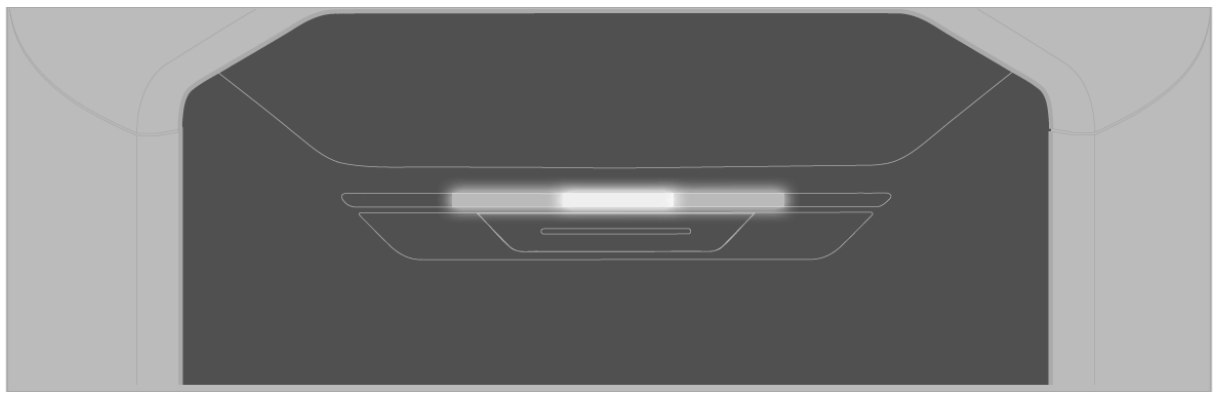
Status	Description
Off	The battery is powered off.
Breathing White	The battery is powered on and functioning normally.
Flashing White	The battery is performing a firmware update.

Status LED

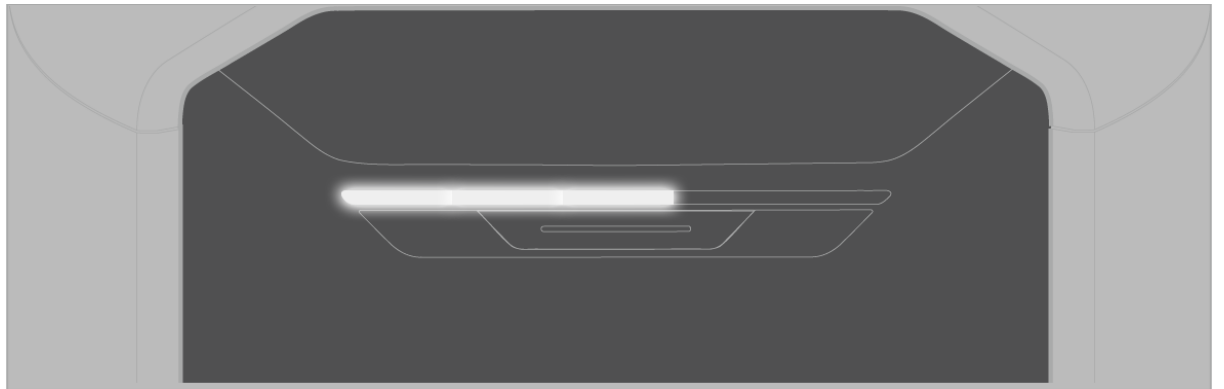
The status LED displays an outwards running pattern when the extra battery is powering on.



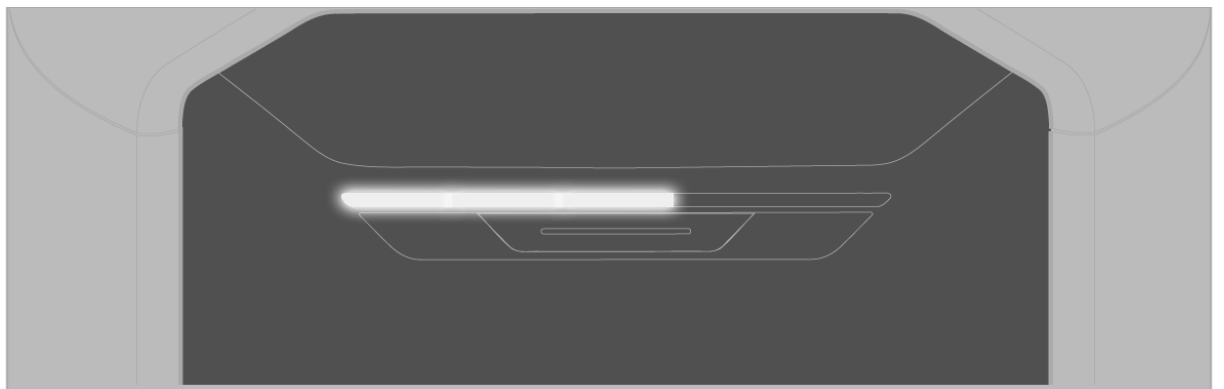
The status LED displays an inwards running pattern when the extra battery is powering off.



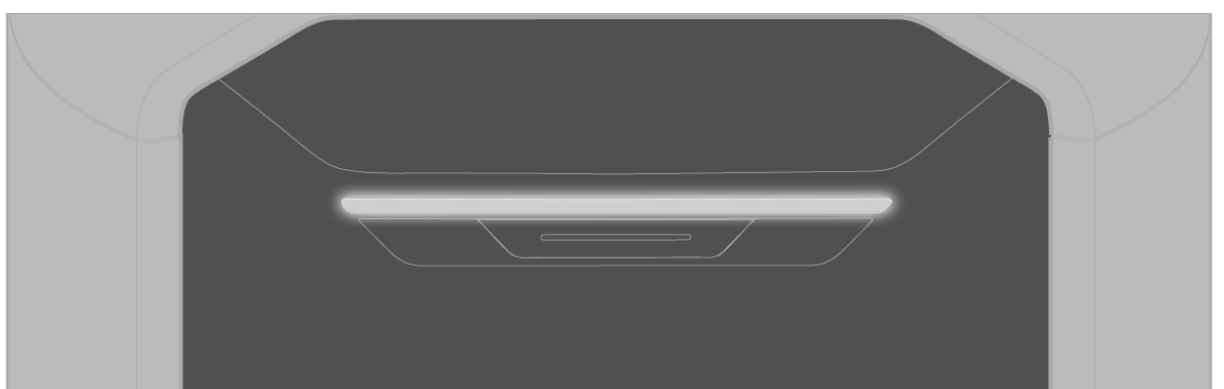
When the status LED light is solid, the number of LEDs that are lit up indicate the current battery level.



When a part of the status LED is blinking, it indicates the battery is charging.



When the entire status LED is blinking, it indicates that an error has occurred.



Get Started

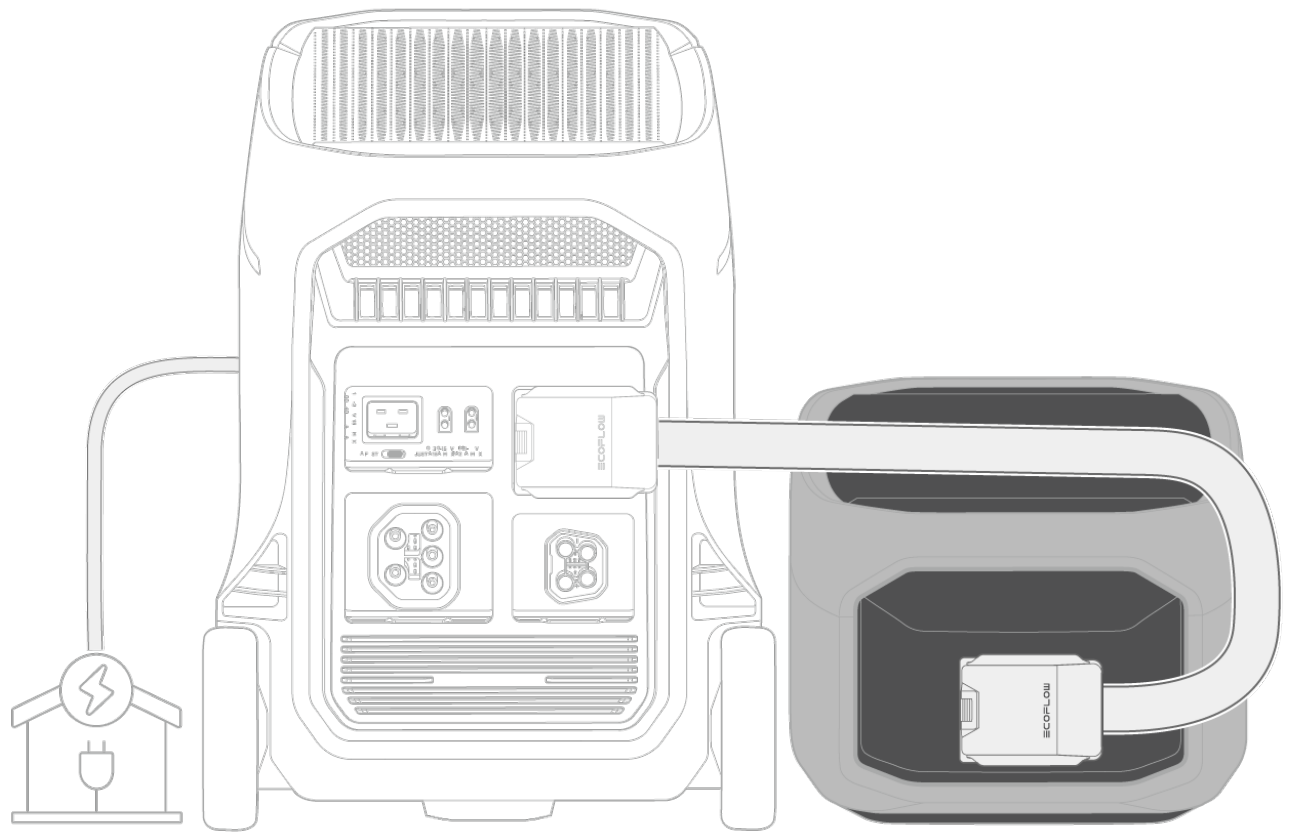
Support Your EcoFlow DELTA Pro 3

The extra battery can expand the power station's battery capacity by storing more power. It also functions as a backup power source for loads when the power station's battery is low.

To Connect the Extra Battery

1. Connect the extra battery to the power station's Extra Battery port.
2. The extra battery is considered successfully installed once the battery icon

is displayed on the screen of the power station.



Notice:

- i EcoFlow DELTA Pro 3 power station supports connecting up to 2 extra batteries. Do not stack batteries on the power station. If stacking is necessary, place the power station and batteries with their long edges against the wall to prevent accidental falling.

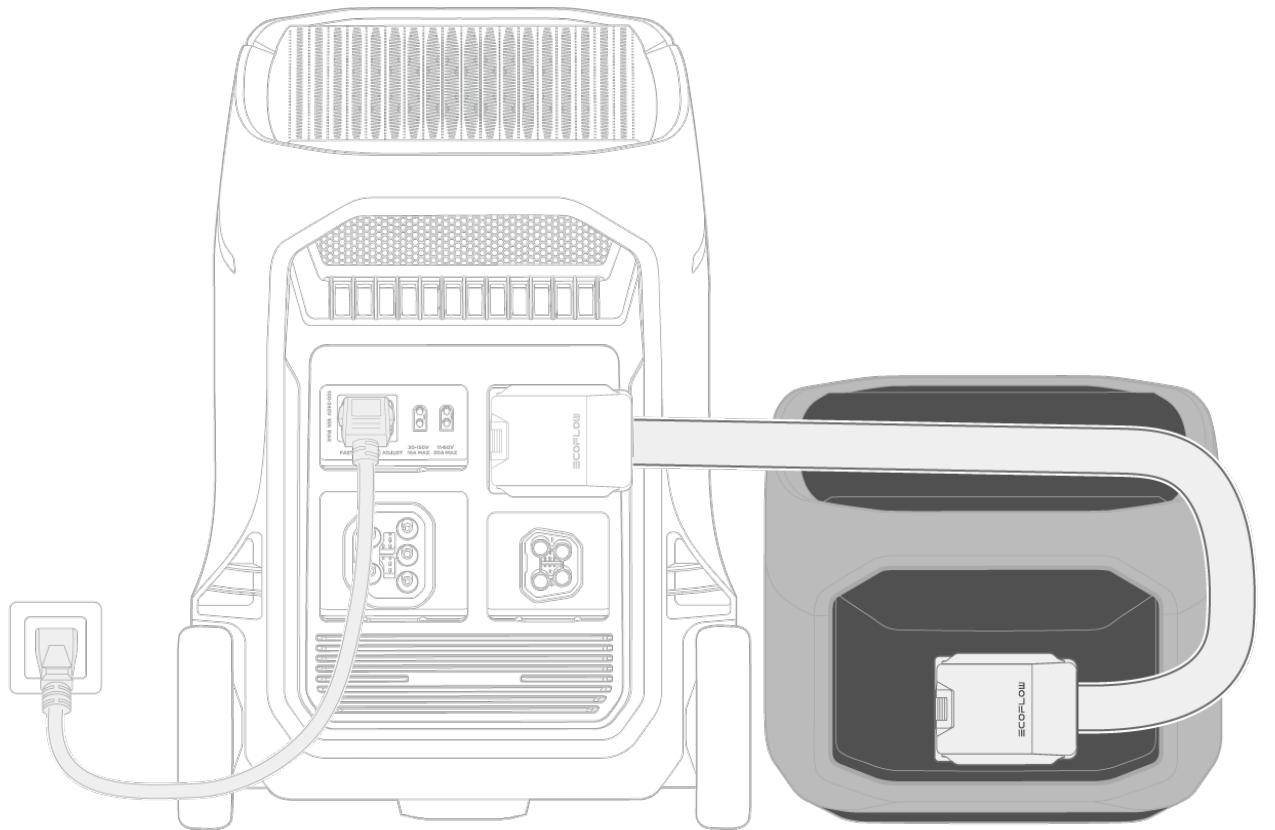
To Remove the Extra Battery

Directly remove the connection between the power station and the extra battery.

Charge Your Smart Extra Battery

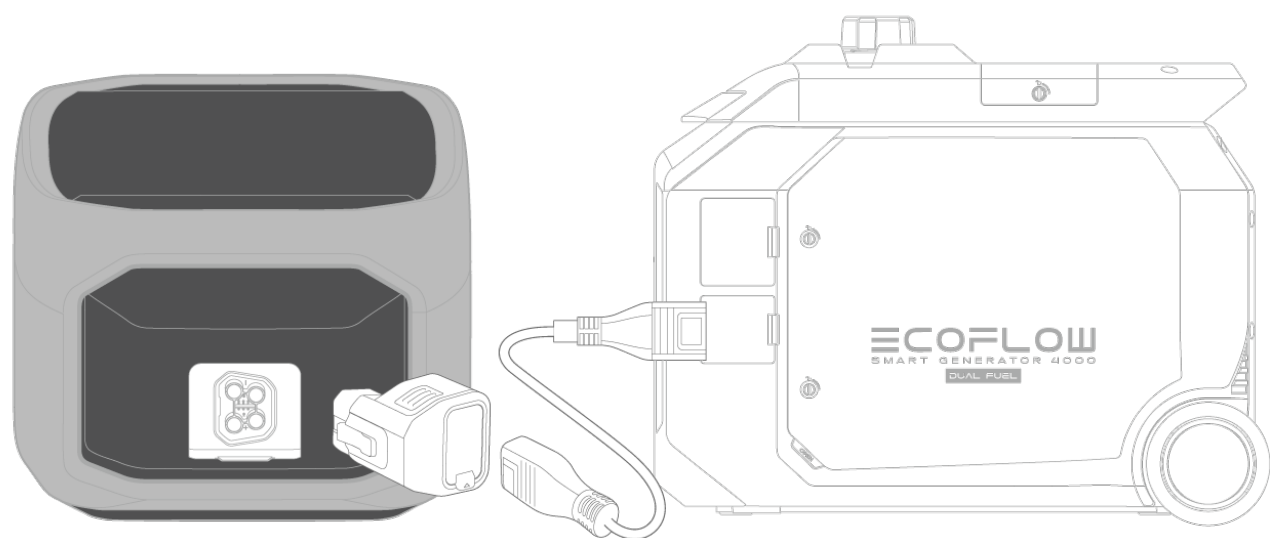
Method 1: Via EcoFlow DELTA Pro 3

Connect the battery to the DELTA Pro 3 portable power station using the provided extra battery cable. Then connect the power station to a power source.



Method 2: Via EcoFlow Smart Generator (Dual Fuel)

Install the [DELTA Pro to Smart Generator Adapter](#) into the battery's Extra Battery port. Then use that to connect the extra battery to an EcoFlow smart generator's XT150 port.



Storage and Maintenance

1. Storage

- Store the device in an environment between -10°C and 45°C , with a recommended range of approximately 0°C to 30°C to maintain battery health.
- Keep the product in a dry, cool, well-ventilated area that is secure and reduces the risk of falling.
- Ensure the device is kept away from water sources, heat sources, strong magnetic fields, environments with corrosive gases, and any flammable or explosive substances.
- For long-term storage, charge and discharge the product once every 3 months (fully charge it, then discharge to 60% for storage) to maintain battery health.
- Do not leave the device uncharged or unused for more than 6 months;

otherwise, the warranty will be void.

2. Maintenance

- **Cleaning**

Use a soft, dry cloth to wipe and clean the product.

- **Maintain Battery Health**

Avoid leaving the product unused for extended periods of time. Charge and discharge the product every 3 months to increase its lifespan.

Safety Instructions and Compliances

Disclaimer

Please read the product document and ensure that you understand it fully before using the product. After reading this document, keep it for future reference. Improper use of this product may cause serious injury to yourself or others, or cause product damage and property loss. Once you use this product, it is deemed that you understand, approve and accept all the terms and content in this document. EcoFlow is not liable for any loss caused by the user's failure to use the product in compliance with the product document. In compliance with laws and regulations, EcoFlow reserves the right to the final interpretation of this document and all documents related to the product. This document is subject to changes (updates, revisions, or termination) without prior notice. Please visit EcoFlow's official website to obtain the latest product information: <https://www.ecoflow.com/>.

Safety Instructions

1. Do not subject this product to severe impacts, vibrations, or drops.
2. Do not carry this product onto a plane.
3. Do not use the product near a heat source, such as a fire source or a heating furnace.
4. Do not get the product wet or immerse it in any liquid. When using the product in wet environments like rainy areas or places near water, protect it with a waterproof bag.
5. Follow the environment temperature requirements specified in the product specification to use or store the product. Avoid degradation or damage to the product, or risks to personal safety due to excessively high or low temperatures.
6. Do not use the product in an environment with strong static electricity or magnetic fields.
7. Keep the product out of reach of children and pets. If the product is to be used near children, they should be closely supervised.
8. Keep the product away from fumes, smoke, steam, and dust.
9. Store the product in a tidy, dry, and well-ventilated place.
10. Do not disassemble, repair, or modify this product by yourself. For any maintenance or service, please contact EcoFlow Customer Service.
11. Always disconnect the product from all external power sources before attempting any service or maintenance.
12. To reduce risk of damage to the electric plug and cord, pull the plug rather

- than the cord when disconnecting the product.
13. Do not pierce the product with sharp objects.
 14. Do not put fingers or hands into the product.
 15. Do not insert wires or other metal objects into the product to prevent short circuits.
 16. Do not use any unofficial or unrecommended components or accessories. For any replacements, please contact EcoFlow for further assistance.
 17. Do not operate this product with a damaged cord or plug, or a damaged output cable.
 18. Do not stack any heavy objects on the product.
 19. Place the product on a stable and flat surface. Avoid damage to the device or personal injury due to the product falling or tipping over.
 20. Use a soft, dry cloth to wipe and clean the product.
 21. **Use in Repair Facility:** During use in a repair facility like a vehicle repair center, workshop, or any other place where repairs are conducted, do not place the product on the floor, or at a height less than 457 mm (18 inches) above the floor.

In Case of Emergency

1. In case of emergency, take precautions against electric shock before touching the product, such as wearing insulating gloves.
2. If the product gets wet, stop using it immediately and refrain from further operation or powering it on. Place the product in a secure, waterproof, and well-ventilated area, then contact EcoFlow Customer Service for assistance.
3. If the product falls into water, place it in a secure, waterproof, and well-ventilated area, and keep it away from contact until it is completely dry. The dried product should not be used again and must be properly disposed of according to local laws and regulations.
4. If the product catches fire, we recommend that you use the fire extinguishers in the following order: water or water mist, sand, fire blanket, dry powder, and finally a carbon dioxide fire extinguisher.

Recycling and Disposal

1. The product with severe damage, malfunction, or depleted battery life should be properly disposed of or recycled.
2. The product contains batteries. Please dispose of the product following local laws and regulations for battery disposal and recycling. Do not dispose of it with household waste to avoid environmental pollution and safety hazards.
3. If possible, ensure the battery is completely discharged (to 0% capacity) before disposing of the product. If not, refrain from placing the battery directly into a battery recycling box. Instead, contact a professional battery recycling company for proper handling.

Regulatory Compliance

FCC Compliance Statement

This device complies with part 15 of the FCC Rules. Operation is subject to

the following two conditions:

- (1) This device may not cause harmful interference, and
- (2) this device must accept any interference received, including interference that may cause undesired operation.

Any Changes or modifications not expressly approved by the party responsible for compliance could void the user's authority to operate the equipment.

Note: This equipment has been tested and found to comply with the limits for a Class B digital device, pursuant to part 15 of the FCC Rules. These limits are designed to provide reasonable protection against harmful interference in a residential installation. This equipment generates uses and can radiate radio frequency energy and, if not installed and used in accordance with the instructions, may cause harmful interference to radio communications. However, there is no guarantee that interference will not occur in a particular installation. If this equipment does cause harmful interference to radio or television reception, which can be determined by turning the equipment off and on, the user is encouraged to try to correct the interference by one or more of the following measures:

- Reorient or relocate the receiving antenna.
- Increase the separation between the equipment and receiver.
- Connect the equipment into an outlet on a circuit different from that to which the receiver is connected.
- Consult the dealer or an experienced radio/TV technician for help.

IC Compliance Statement

This device complies with Industry Canada licence-exempt RSS standard(s). Operation is subject to the following two conditions:

- (1) this device may not cause interference, and
- (2) this device must accept any interference, including interference that may cause undesired operation of the device.

This Class B digital apparatus complies with Canadian ICES-003.

Le présent appareil est conforme aux CNR d'Industrie Canada applicables aux appareils radio exempts de licence. L'exploitation est autorisée aux deux conditions suivantes:

- (1) l'appareil ne doit pas produire de brouillage, et
- (2) l'utilisateur de l'appareil doit accepter tout brouillage radioélectrique subi, même si le brouillage est susceptible d'en compromettre le fonctionnement.

Cet appareil numérique de la classe B est conforme à la norme NMB-003 du Canada.



CE

Hereby, EcoFlow Inc. declares that this product is in compliance with Directives 2014/30/EU, 2011/65/EU(RoHS), (EU) 2015/863(RoHS). The full text of the EU Declaration of Conformity is available at the following Internet address:

<http://www.ecoflow.com/eu/eu-compliance>



WEEE

This marking indicates that this product should not be disposed of with other household waste within the EU. Recycle this product properly to prevent possible damage to the environment or a risk to human health via uncontrolled waste disposal and in order to promote the sustainable reuse of material resources. Please return your used product to an appropriate collection point or contact the retailer where you purchased this product. Your retailer will accept used products and return them to an environmentally-sound recycling facility.



Battery Directive

Hereby, EcoFlow Inc. declares that the equipment type battery is in compliance with Regulation (EU) 2023/1542 of the European Parliament.

Appendix

What's in the Box

1. EcoFlow DELTA Pro 3 Smart Extra Battery ×1
2. EcoFlow Extra Battery Cable ×1
3. Product Document Bundle ×1



If any item is damaged or missing, contact EcoFlow Customer Service for assistance.

Technical Specifications

General

Model EFD521-EB

Net.Weight Approx. 33 kg (72.75 lb)

Dimensions Approx. 215.5 x 295 x 691.8 mm (8.49 x 11.61 x 27.24 in.)

Output

Extra Battery EcoFlow Proprietary Port
Port 40V-58.4V \approx 100A continues

Input

Extra Battery EcoFlow Proprietary Port
Port 40V-58.4V \approx 80A Max

Battery Info

Nominal Voltage 51.2V \approx

Rated

Capacity	80Ah 4096Wh
Cell Chemistry	LFP (LiFePO4)
Cycle Life	The battery maintains 80%+ SoH (State of Health) after 4000 cycles at 0.5C/0.5C at 25°C (77°F)
Protection Type	Over Voltage Protection, Overload Protection, Over Temperature Protection, Short Circuit Protection, Low Temperature Protection, Low Voltage Protection, Overcurrent Protection
Environment	
Temperature	
Optimal Operating Temperature	20°C-30°C (68°F-86°F)
Charge Temperature	0°C-45°C (32°F-113°F)
Discharge Temperature	-10°C to 45°C (14°F-113°F)
Storage Temperature	-10°C to 45°C (14°F-113°F)
Other	
IP Rating	IP20 (Internal battery pack: IP65)