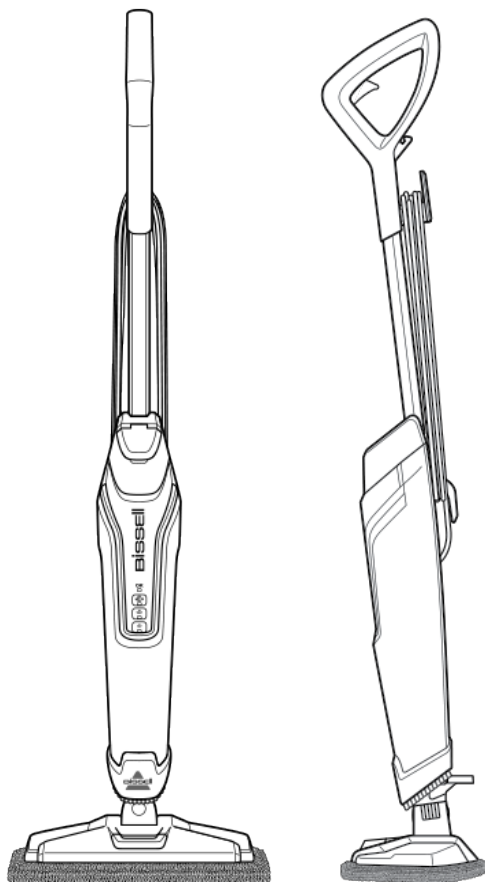




POWERFRESH

USER GUIDE
2113N



IMPORTANT SAFETY INSTRUCTIONS

READ ALL INSTRUCTIONS BEFORE USING YOUR APPLIANCE.

When using an electrical appliance, basic precautions should be observed, including the following:

WARNING

TO REDUCE THE RISK OF FIRE, ELECTRIC SHOCK, OR INJURY:

- » This appliance can be used by children aged from 8 years and above and persons with reduced physical, sensory or mental capabilities or lack of experience and knowledge if they have been given supervision or instruction concerning use of the appliance in a safe way and understand the hazards involved. Cleaning and user maintenance shall not be made by children without supervision.
 - » Children should be supervised to ensure that they do not play with the appliance.
 - » If the supply cable is damaged, it must be replaced by the manufacturer, its service agent, or similarly qualified person in order to avoid a hazard.
 - » Keep hair, loose clothing, fingers, and all parts of body away from openings and moving parts of the appliance and its accessories.
 - » Do not leave appliance when plugged in.
 - » Unplug from electrical socket when not in use and before servicing.
 - » Do not allow to be used as a toy.
 - » Use only as described in this user guide.
 - » Use only manufacturer's recommended attachments.
 - » Do not use with damaged cable or plug.
 - » Do not immerse in water or liquid.
 - » If appliance is not working as it should, has been dropped, damaged, left outdoors, or dropped into water; do not attempt to operate it and return it to a service center.
 - » Do not pull or carry by cable, use cable as a handle, close door on cable, or pull cable around sharp edges or corners.
 - » Do not run appliance over cable.
 - » Keep cable away from heated surfaces.
 - » Do not unplug by pulling on cable.
 - » To unplug, grasp the plug, not the cable.
- » Do not handle plug or appliance with wet hands.
 - » Do not put any object into openings.
 - » Do not use with any opening blocked; keep free of dust, lint, hair, and anything that may reduce air flow.
 - » Turn off all controls before unplugging.
 - » Use extra care when cleaning on stairs.
 - » Do not use to pick up flammable or combustible liquids, such as petroleum, or use in areas where they may be present.
 - » Do not pick up toxic material (chlorine bleach, ammonia, drain cleaner, etc.)
 - » Do not use appliance in an enclosed space filled with vapours given off by oil base paint, paint thinner, some mothproofing substances, flammable dust, or other explosive or toxic vapours.
 - » Do not pick up hard or sharp objects such as glass, nails, screws, coins, etc.
 - » Use only on dry, indoor surfaces.
 - » Keep appliance on a level surface.
 - » Do not pick up anything that is burning or smoking, such as cigarettes, matches, or hot ashes.
 - » Do not use without dust bag and/or filters in place.
 - » Do not use outdoors or on wet surfaces
 - » This appliance is provided with double insulation. Use only identical replacement parts.
 - » Do not leave machine running in the same spot without handle fully upright.
 - » The appliance is not to be used if it has been dropped, if there are visible signs of damage or if it is leaking.
 - » Keep the appliance out of reach of children when it is energized or cooling down.
 - » The foot surfaces are liable to get hot during use.
 - » Do not direct steam at people, animals, or equipment containing electrical components.
 - » Do not use on leather, wax polished furniture or floors, synthetic fabrics, velvet or other delicate, steam-sensitive materials.

WARNING

ALWAYS CONNECT TO A PROPERLY EARTHED ELECTRICAL SOCKET.

WARNING

LIQUID OR STEAM MUST NOT BE DIRECTED TOWARDS EQUIPMENT CONTAINING ELECTRICAL COMPONENTS.

WARNING

SURFACE MAY BE HOT. AVOID CONTACT.



THIS SYMBOL MEANS WARNING: DANGER OF SCALDING

SAVE THESE INSTRUCTIONS

FOR OPERATION ON A 220-240 VOLT A.C. 50-60 HZ POWER SUPPLY ONLY.

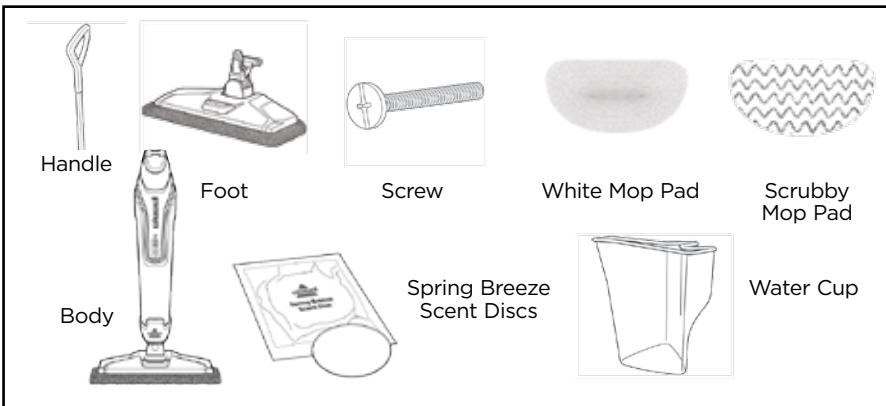
This model is for household use only.

Thanks for buying a PowerFresh

We love to clean and we're excited to share one of our innovative products with you. We want to make sure your steam mop works as well in years to come as it does today, so this guide has tips on how to use (pages 6-9) and maintain (pages 10-11).

Your steam mop needs a little assembly before you can put it to work, so flip to page 5 and let's get started!

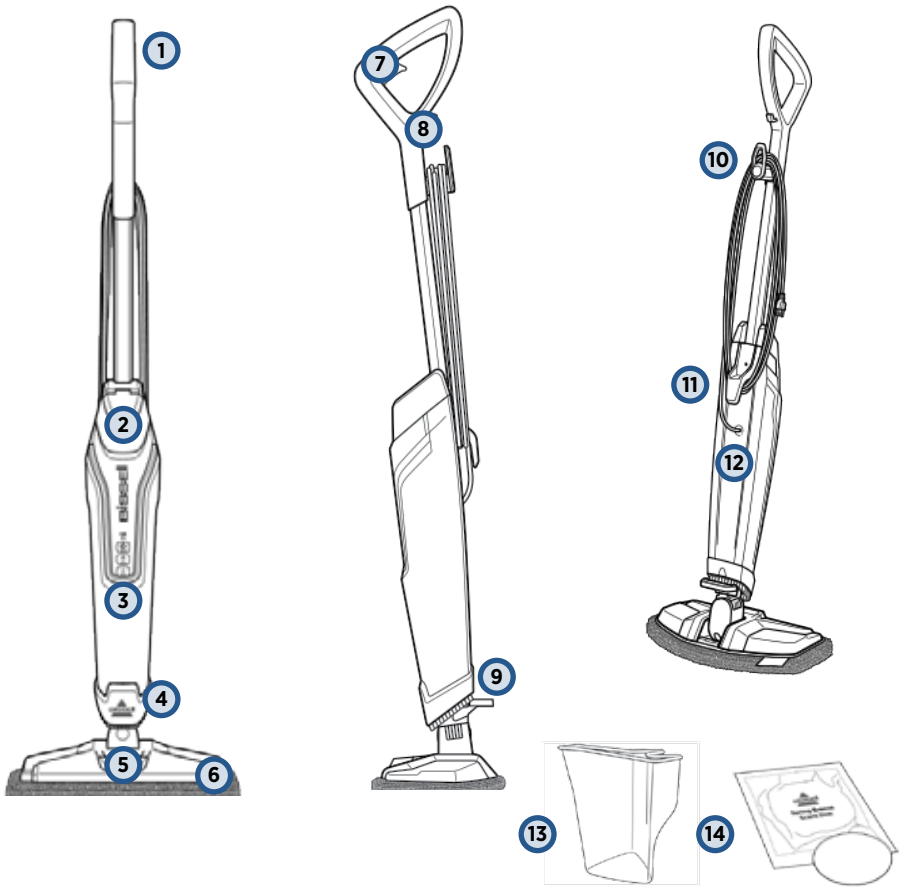
What's In The Box?



NOTE: Standard accessories may vary by model. To identify what should be included with your purchase, please refer to the "Carton Contents" list located on the carton top flap.

Safety Instructions.....	2	Maintenance & Care	10-11
Product View.....	4	Guarantee.....	12
Assembly	5	Consumer Care.....	12
Operations	6-9		

Getting to Know Your PowerFresh



- 1 Strain Reliever Handle
- 2 Easy Fill Water Tank
- 3 Smart Set Steam Control
- 4 SpotBoost Brush
- 5 Scent Disc Tray
- 6 Edge-Cleaning Mop Head
- 7 On-Demand Steam Trigger

- 8 In-Use Cord Clip
- 9 Pedal to release SpotBoost Brush
- 10 Quick Release Cord Wrap
- 11 Lower Cord Wrap
- 12 Water Filter
- 13 Attachable Water Cup
- 14 Spring Breeze Scent Discs

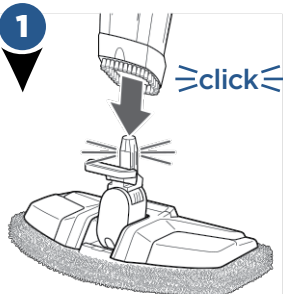
Assembly

⚠ WARNING

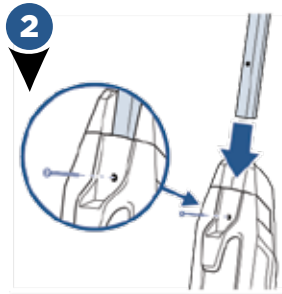
Do not plug in your PowerFresh Steam Mop until you are familiar with all instructions and operating procedures.

Your BISSELL PowerFresh Steam Mop assembles quickly and easily. It is packaged with the following items:

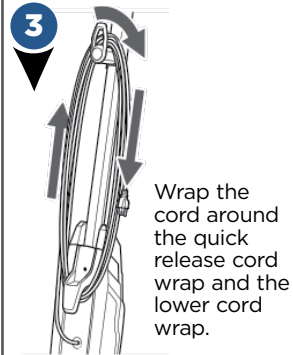
- Handle with one screw
- Machine Foot
- Body
- 2 Microfibre Washable Mop Pads
- 2 Spring Breeze Scent Discs
- Water Cup



1
Attach lower body to mop head by snapping it into place.



2
Then, insert handle into body of unit and screw until tightened.



3
Wrap the cord around the quick release cord wrap and the lower cord wrap.

NOTE: To easily unwrap the cord for use, just turn the quick release cord wrap downward to remove the cord from the cord wrap.

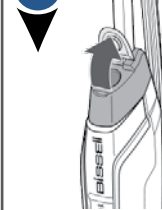
Filling Your Water Tank

1



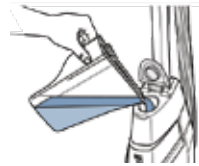
The clean water tank is located on the top of the body of the machine.

2



Lift the water tank cap straight up to open.

3



Use water cup provided and fill with distilled or demineralized water, recommended in place of tap water. Close the water tank cap after filling.

A few notes about filling the Water Tank:

- The Water Tank's capacity is 560 mL

DO NOT USE CHEMICALS IN THE WATER TANK OF YOUR POWERFRESH STEAM MOP.

Attaching Microfibre Mop Pads

1

Your PowerFresh Steam Mop may have come with two different pads.



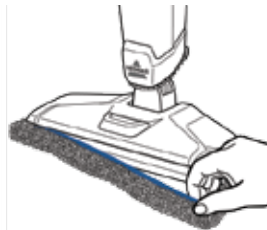
**White
Mop Pad**



**Scrubby
Mop Pad**

The White Pad is best for everyday use on delicate flooring like sealed hardwoods and laminate. The Scrubby Pad is best to use for scrubbing heavily soiled floors and cleaning tougher messes.

2



To attach mop pad, wrap mop pad around the bottom of the foot, making sure the gray stitching is located on the front of the foot and the Quick Grip Release Tab is located on the back.

Using SpotBoost Brush

1

Step down on the pedal located on the back of the machine and lift up to expose the SpotBoost Brush located on the bottom of the unit.



2



Using the SpotBoost Brush, move back and forth to clean grout, crevices and sticky messes.

⚠ WARNING

Do not step on the back pedal to recline the unit. When removing the foot, make sure to lift away from your body as the bottom of the brush will release steam. Excess effort on the brush may be abrasive to some surfaces; test first.

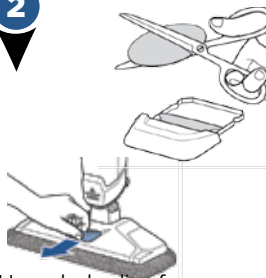
Using Scent Discs Tray

1



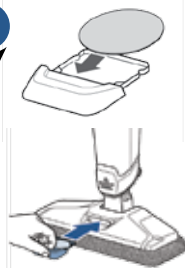
To insert scent discs, pull the tray located on top of mop head out to open.

2



Use whole disc for a refreshing scent or cut disc in half for a lighter scent.

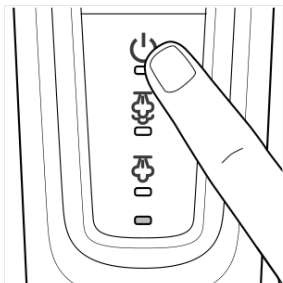
3



Place scent disc into tray and push tray in to close.

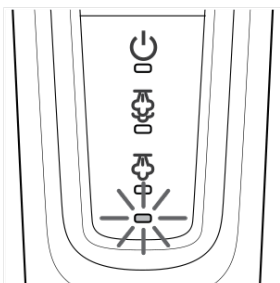
SmartSet Steam Control

1



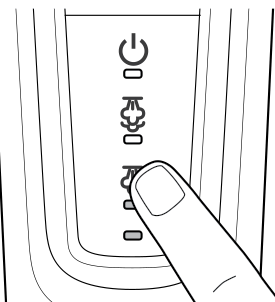
Plug machine into a properly grounded outlet and press the power button to turn ON.

2



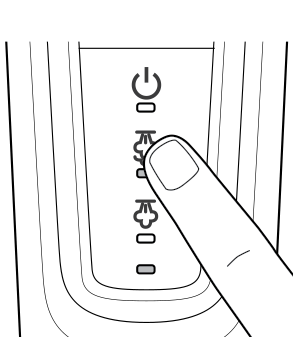
Once the machine is ON, the READY light will begin blinking. The blinking light indicates the machine is warming up.

3



When the blinking light changes to a solid light, select the desired steam level based on your cleaning needs. Push the LOW STEAM button once for delicate floors or for light, everyday cleaning. Push again to turn off.

4



Push HIGH STEAM button once for cleaning durable floors or sticky messes. Push again to turn off.

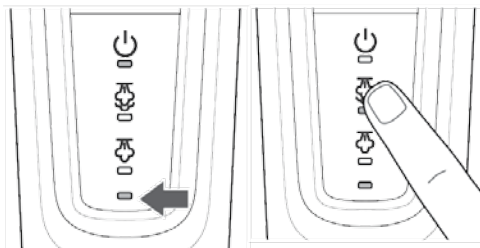
NOTE: You must select the POWER button and wait until the READY light is a solid color before selecting your steam level. Upon the first use of your steam mop or first use after refilling the water tank, the pump may make a “knocking” sound. This is normal and will diminish after a few seconds.

Cleaning Your Hard Floors

NOTE: Before you clean, thoroughly sweep or vacuum floor prior to cleaning with the PowerFresh Steam Mop.

YOUR STEAM MOP IS DESIGNED TO CLEAN HARD FLOORING SUCH AS CERAMIC TILE, VINYL, LAMINATE, MARBLE, STONE AND SEALED HARDWOOD FLOORS. USE OF YOUR STEAM MOP ON WAXED OR SOME UNWAXED FLOORS MAY RESULT IN A DIMINISHED GLOSSINESS. THE STEAM MOP IS NOT FOR USE ON UNSEALED FLOORS. FOR BEST RESULTS, TEST IN AN INCONSPICUOUS AREA AND CHECK THE CARE INSTRUCTIONS FROM YOUR FLOORING MANUFACTURER.

1



Plug the machine into a properly grounded outlet. To start cleaning your hard floors, turn the machine ON by pressing the POWER button. Once the blinking light turns solid, select the appropriate steam level. See page 8.

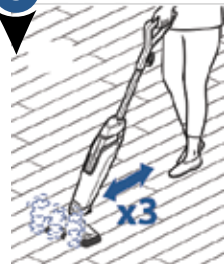
Press On-Demand Steam Trigger to release steam as desired.

2



Step on the back of the foot to recline the body of the machine to begin cleaning.

3



To sanitize an area of your floor, use the microfibre cloth pads and slowly and evenly stroke your steam mop back and forth at least three times using continuous steam.

When finished, turn the machine off by pressing the POWER button and unplugging the unit.

NOTE: For best results, remove the pad and wash after use.

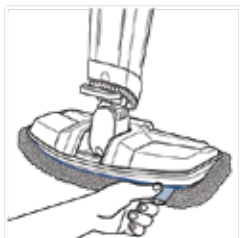
NOTE: For overly challenging and stuck-on messes, step on the release pedal located on the back of the machine and lift up to use the SpotBoost Brush. See page 7. When removing the foot, make sure to lift it away from your body as the bottom of the brush will release steam.

Maintenance: Cleaning Your Steam Mop

⚠️ WARNING

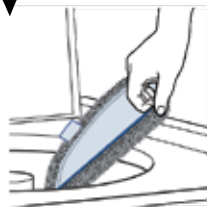
To reduce the risk of fire, electric shock or injury, turn power OFF and disconnect plug from electrical outlet before performing maintenance or troubleshooting.

1



Turn off and unplug the machine from the grounded outlet. Carefully remove mop pad using the Quick Grip Release Tab from the mop head.

2



Mop pads can be machine washed in warm water. Use only non-bleach liquid detergents. Do not use fabric softeners or bleach. For best results, air dry.

⚠️ WARNING

Mop pad and lower assembly may be hot.

3



Remove the scent disc from the scent disc tray.

4



Wrap cord around Quick Release Cord Wrap on the back of the steam mop and wipe all surfaces of the machine with a soft cloth.

5



Store upright in a protected, dry area.

Maintenance: Replacing the Water Filter

WARNING

To reduce the risk of fire, electric shock or injury, turn power OFF and disconnect plug from electrical outlet before performing maintenance or troubleshooting.

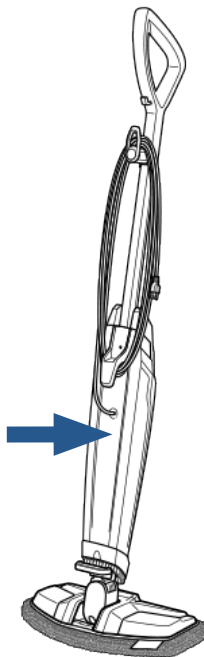
It is recommended to fill your unit with distilled water only. It is essential to check the filter and replace it when it is no longer effective. Change the filter when the green grains turn blue.

If the filter is not changed at the appropriate time, calcium deposits may accumulate on the heater, causing damage or reduced performance.

To replace the filter:

- 1.** Using the grips on the side of the filter, pull filter out of the unit.
- 2.** Push new filter firmly into the machine until it's flush.

Water Filter Location



Consumer Guarantee

This Guarantee only applies outside of the USA and Canada. It is provided by BISSELL International Trading Company BV ("BISSELL").

This Guarantee is provided by BISSELL. It gives you specific rights. It is offered as an additional benefit to your rights under law. You also have other rights under law which may vary from country to country. You can find out about your legal rights and remedies by contacting your local consumer advice service. Nothing in this Guarantee will replace or lessen any of your legal rights or remedies. If you need additional instruction regarding this Guarantee or have questions regarding what it may cover, please contact BISSELL Consumer Care or contact your local distributor.

This Guarantee is given to the original purchaser of the product from new and is not transferable. You must be able to evidence the date of purchase in order to claim under this Guarantee.

Limited 2 Year Guarantee from the date of purchase by original purchaser

Subject to the *EXCEPTIONS AND EXCLUSIONS identified below, BISSELL will repair or replace (with new or remanufactured components or products), at BISSELL's option, free of charge, any defective or malfunctioning part or product.

BISSELL recommends that the original packaging and evidence of the date of purchase be kept for the duration of the Guarantee period in case the need arises within the period to claim on the Guarantee. Keeping the original packaging will assist with any necessary re-packaging and transportation but is not a condition of the Guarantee.

If for your product is replaced by BISSELL under this Guarantee, the new item will benefit from the remainder of the term of this Guarantee (calculated from the date of the original purchase). The period of this Guarantee shall not be extended whether or not your product is repaired or replaced.

*EXCEPTIONS AND EXCLUSIONS FROM THE TERMS OF THE GUARANTEE

This Guarantee applies to products used for personal domestic use and not commercial or hire purposes. Consumable components such as filters, belts and mop pads, which must be replaced or serviced by the user from time to time, are not covered by this Guarantee.

This Guarantee does not apply to any defect arising from fair wear and tear. Damage or malfunction caused by the user or any third party whether as a result of accident, negligence, abuse, neglect, or any other use not in accordance with the User Guide is not covered by this Guarantee.

An unauthorised repair (or attempted repair) may void this Guarantee whether or not damage has been caused by that repair/attempt.

Removing or tampering with the Product Rating Label on the product or rendering it illegible will void this Guarantee.

SAVE AS SET OUT BELOW BISSELL AND ITS DISTRIBUTORS ARE NOT LIABLE FOR ANY LOSS OR DAMAGE THAT IS NOT FORESEEABLE OR FOR INCIDENTAL OR CONSEQUENTIAL DAMAGES OF ANY NATURE ASSOCIATED WITH THE USE OF THIS PRODUCT INCLUDING WITHOUT LIMITATION LOSS OF PROFIT, LOSS OF BUSINESS, BUSINESS INTERRUPTION, LOSS OF OPPORTUNITY, DISTRESS, INCONVENIENCE OR DISAPPOINTMENT. SAVE AS SET OUT BELOW BISSELL'S LIABILITY WILL NOT EXCEED THE PURCHASE PRICE OF THE PRODUCT.

BISSELL DOES NOT EXCLUDE OR LIMIT IN ANY WAY ITS LIABILITY FOR (A) DEATH OR PERSONAL INJURY CAUSED BY OUR NEGLIGENCE OR THE NEGLIGENCE OF OUR EMPLOYEES, AGENTS OR SUBCONTRACTORS; (B) FRAUD OR FRAUDULENT MISREPRESENTATION; (C) OR FOR ANY OTHER MATTER WHICH CANNOT BE EXCLUDED OR LIMITED UNDER LAW.

Consumer Care

If your BISSELL product should require service or to claim under our limited guarantee, please contact us as follows:

Website:

www.BISSELL.eu

Email:

Customers.Bitco@bissell.com

Write:

BISSELL International Trading Company B.V.
Stadhouderskade 55
1072 AB Amsterdam
The Netherlands

Visit the BISSELL website: www.BISSELL.eu

When contacting BISSELL, have model number of cleaner available.

Please record your Model Number: _____ Please record your Purchase Date: _____

NOTE: Please keep your original sales receipt. It provides proof of the date of purchase in the event of a Guarantee claim. See Guarantee for details.



©2016 BISSELL Homecare, Inc
Grand Rapids, Michigan
All rights reserved. Printed in China
Part Number 161-1039 12/16
Visit our website at: www.BISSELL.com