

920 MM STONE CUTTING MACHINE

- Cut large-format tiles with an edge length of 920 mm or 650 mm when cutting diagonally
- The mobile cutting head provides better control during cutting
- Swivel-mounted cutting head enables mitre cuts
- Makes mitre and plunge cuts possible
- Easy handling
- High-performance induction motor with heat protection
- Impressive cutting length (920 mm) and cutting height (36 mm)
- Robust steel construction
- 2 guide rails for perfect cutting results
- Customisable laser for precise indication of the cutting edge
- Foldable base frame with travel fixture
- 2 table width extensions to increase the support area for large work pieces

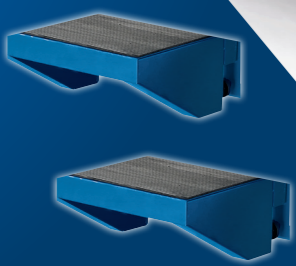
Extensive cutting capacity of 920 mm in length



Customisable laser for precise indication of the cutting edge



INCLUDED



LOGISTICAL DATA

Weight net / gross	50 / 59 kg
Packaging dimensions	1530 x 540 x 585 mm
Article number	5906706901
Barcode	4046664034315
20 Container	42 pcs
40 Container	90 pcs
40 HQ Container	120 pcs

OPTIONAL ACCESSORIES

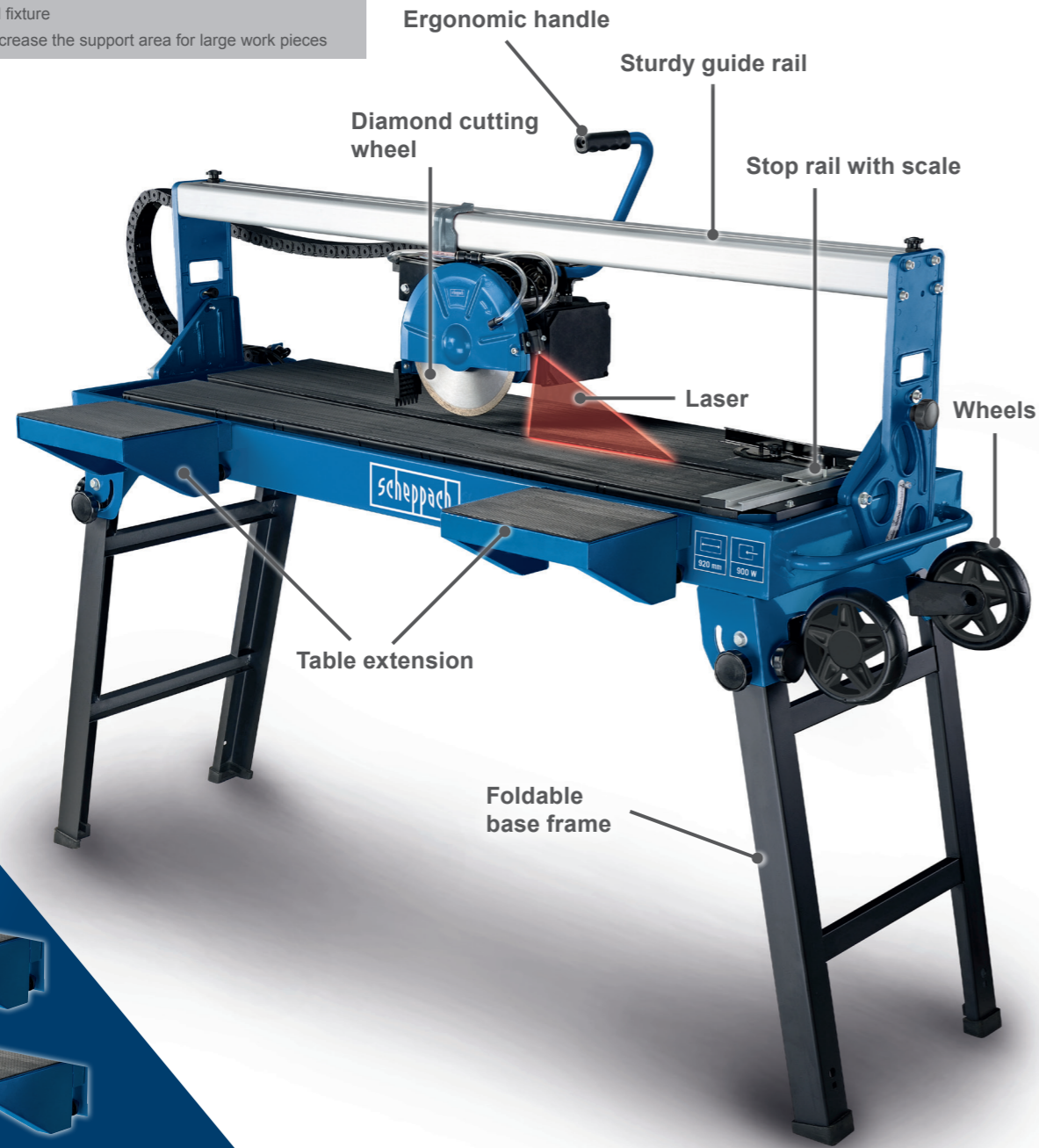
DIAMOND CUTTING DISC



Ø 200 x 25.4 mm  
Article number: 7906700705  
Barcode: 4046664039686



professional, Ø 200 x 25.4 mm  
Article number: 7906700703  
Barcode: 4046664037439



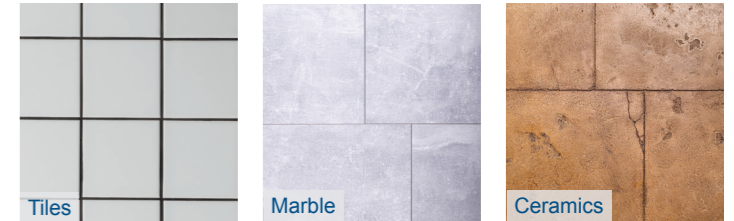
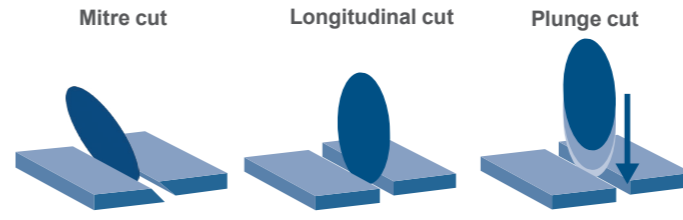
- Ergonomic handle
- Sturdy guide rail
- Diamond cutting wheel
- Stop rail with scale
- Laser
- Wheels
- Table extension
- Foldable base frame

SPECIFICATIONS

Dimensions L x W x H	1560 x 440 x 1140 mm
Table size	1290 x 400 mm
Cutting disc diameter	200 mm
Water	30 L
Cutting length	920 mm
Cutting height 90°	36 mm
Cutting height 45°	29 mm
Motor	230 V~
Input	900 W



EXAMPLES OF USE



2 table width extensions to increase the shelving area for large work pieces



Angular stop from -45° to +45° for mitre cuts



To cut out dust during work, water from an integrated water pump cools the material.



Thanks to the adjustable sawing unit, clean mitre cuts of 0° - 45° can be created.

PRODUCT DETAILS

Cutting length



920 mm

Cutting height



36 mm

Diamond cutting wheel



Ø 200 x 25.4 mm

Cutting laser



Table size



1290 x 400 mm

Speed



3000 U/min

Stop rail with scale



Transportable

