



Aneta TRIND 16800

www.aneta.se

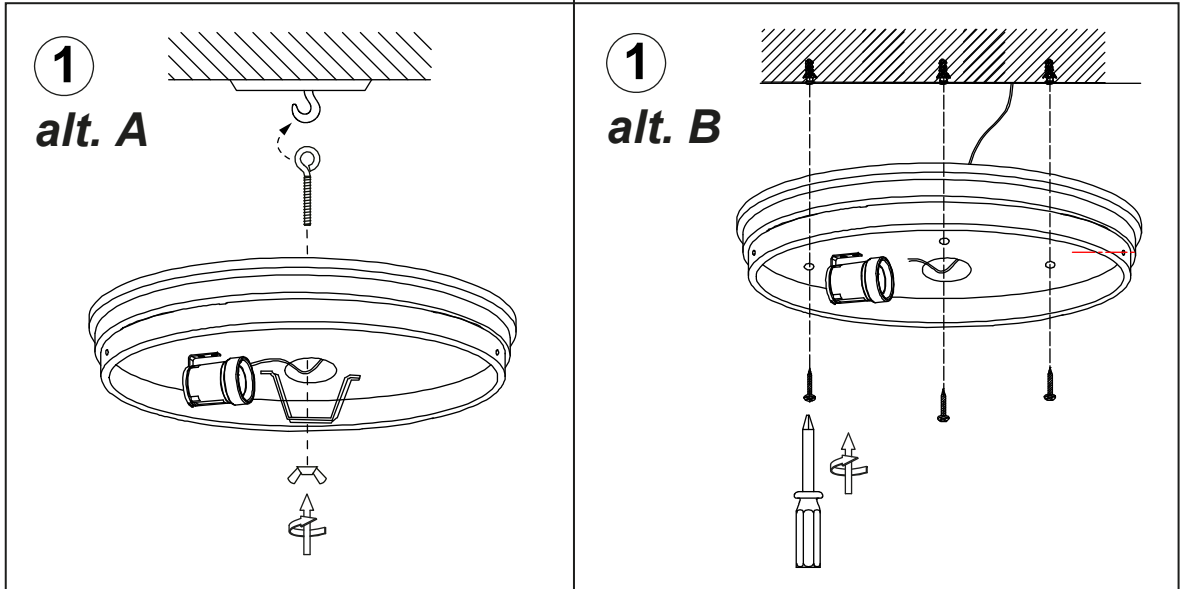
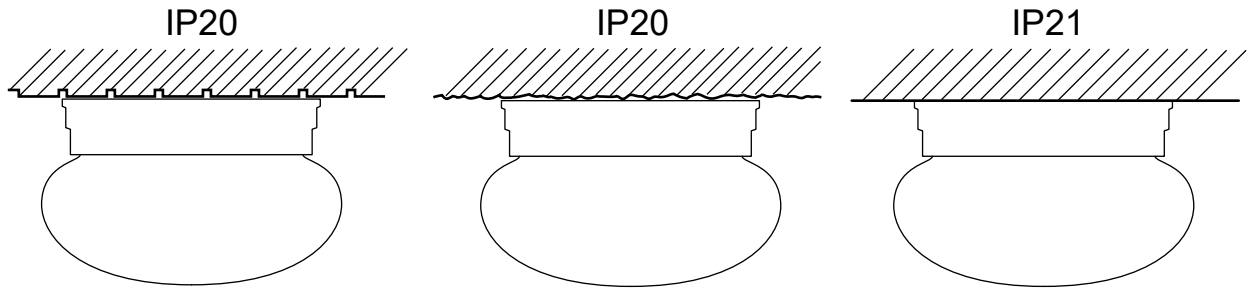
www.scan-lamps.no


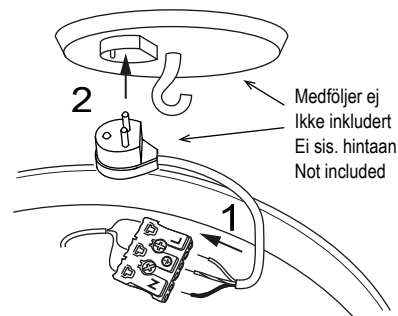
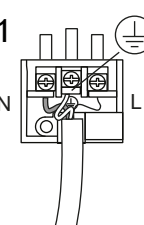
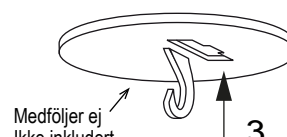
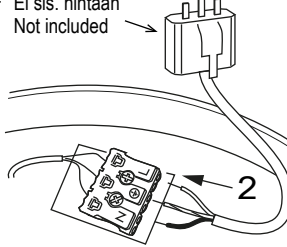
SE: Installationen ska utföras av person med tillräcklig elkunskap.

NO: Skal installeres av auktorisert elektriker.

FI: Asennuksen saa tehdä vain valtuutettu sähköasentaja.

EN: Installation should be performed by a qualified electrician.



<p>2 alt. A DCL lamppropp utan kabel (medföljer ej) DCL lampestøpsel uten ledning (ikke inkludert) DCL pistotulppa ilman johtoa (ei sisälly hintaan) DCL lamp plug without cable (not included)</p> 	<p>2 alt. B Lamppropp med kabel (medföljer ej) Lampestøpsel med ledning (ikke inkludert) Valaisinpistotulppa johdolla (ei sis.) Lamp plug with cable (not included)</p> 
<p>1  Följ instruktionen till DCL lampproppen Følg instruksjonen for DCL lampestøpselen Noudata DCL valaisinpistotulpan ohjeita Follow the instruction for the DCL lamp plug</p> <p>3  Medföljer ej Ikke inkludert Ei sis. hintaan Not included</p> <p>2 </p>	<p>2 alt. C Inkoppling direkt till strömkablar Installasjon direkt till strømledning Kytetään suoraan Installation directly to supply cable</p> 