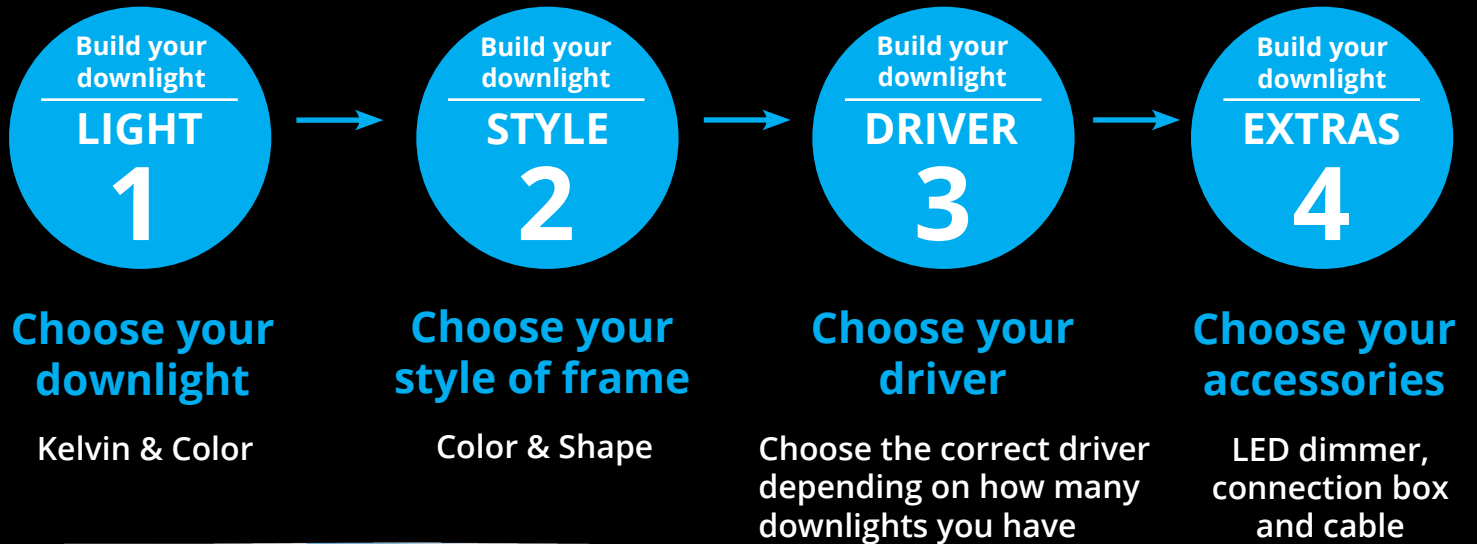




LSP-SERIES Build your downlight



INSTALLATIONTYPE:

Connection box OR Recessed hole

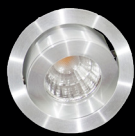
- ✓ LSP-series gives you the opportunity to fit both the driver and downlight in one connection box
- ✓ Simple installation in connection box or ceiling recessed

Build your
downlight

LIGHT

1

Choose your downlight - Color & Kelvin



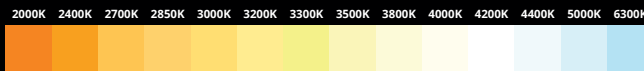
Aluminium



White



Black



● 2700K

● 3000K

Build your
downlight

STYLE

2

Choose your color and correct type of frame

● ALUMINIUM

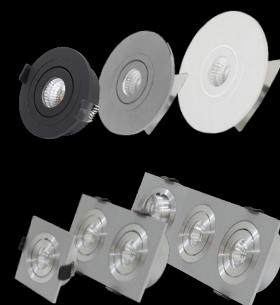
● WHITE

● BLACK

● ROUND: Ø 60 mm, Ø 80 mm, Ø 90 mm

■ SQUARE: 60 x 60 mm, 80 x 80 mm

■ RECTANGULAR: 60 x 115 mm, 60 x 170 mm



RECESSED INSTALLATION HOLE OR INSTALLATION IN CONNECTION BOX



52-54 mm Ø
CC: 55



Frame size
Ø 60 mm



Frame size
60 x 60 mm



Frame size
60 x 115 mm



Frame size
60 x 170 mm



52-62 mm Ø



70 mm Ø



Frame size
Ø 80 mm



Frame size
80 x 80 mm



52-72 mm Ø



70/80 mm Ø



Frame size
Ø 90 mm

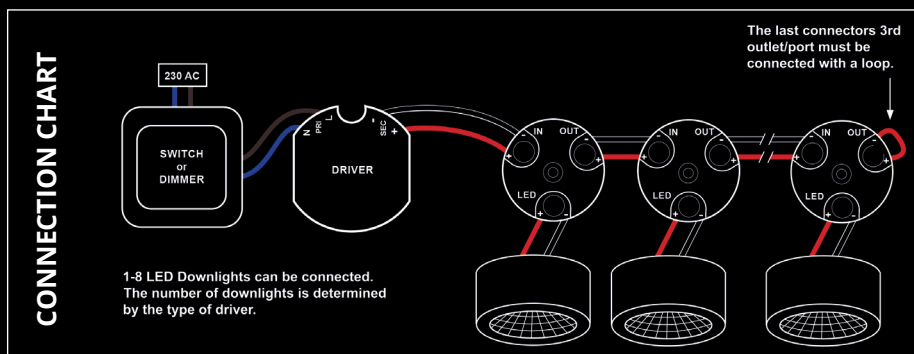
Choose your dimmable driver



CHOICE OF DRIVER IS DEPENDING ON NUMBER OF DOWNLIGHTS:

<p>1 Downlight Driver 2.5 - 4W Connectors included ... Driver LDD04S</p>	<p>2 Downlights Driver 6 - 8W Connectors included ... Driver LDD08S</p>	<p>3-4 Downlights Driver 8 - 12W Connectors included ... Driver LDD12S</p>	<p>4-5 Downlights Driver 12 - 18W Connectors included ... Driver LDD 18S / LDD19S</p>	<p>6-8 Downlights Driver 18.5 - 26W Connectors included ... Driver LDD26S</p>
--	---	--	---	---

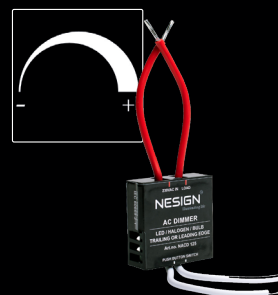
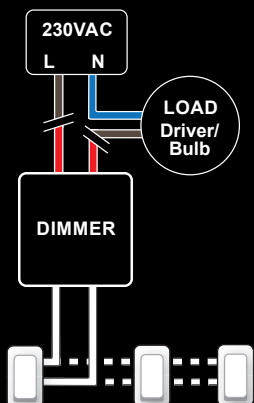
LSP DOWNLIGHTS SHOULD BE INSTALLED IN A SERIAL CONNECTION



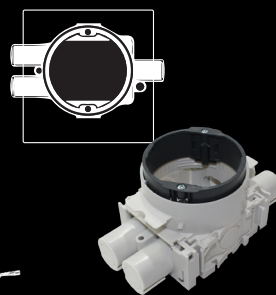
It is important to choose the correct driver according to the exact number of downlights.

All downlights must be connected to the driver before testing or over-voltage to downlight might destroy the LED chip.

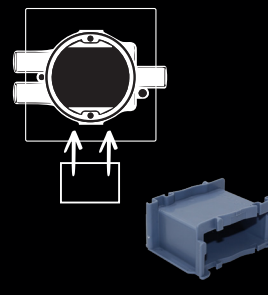
Choose your accessories



AC LED Dimmer
~ 230VAC, 125W (0.5A), 50HZ, IP20. Compact universal build-in dimmer easily installed behind the existing lightswitch.



Connection Box
Height adjustable
Pipe/Conduit: Ø16/20 mm



Side Box
For extra space: Dimmer, Driver or Connectors



LED Cable
Installation cable 60V. Low voltage 2 x 0.50 mm². 10 m.

